

SANHUA'S OFFER FOR
*REFRIGERATION
APPLICATIONS*



SANHUA

*“Strive for perfection,
Pursuit of excellence”*

Sanhua is a leading HVAC&R manufacturer of controls and components with a global footprint and 30 years of experience. Our co-operation with the largest companies in the Automotive,

Appliance and HVAC&R industry makes Sanhua a leading worldwide OEM supplier providing the highest quality components at the most competitive price.

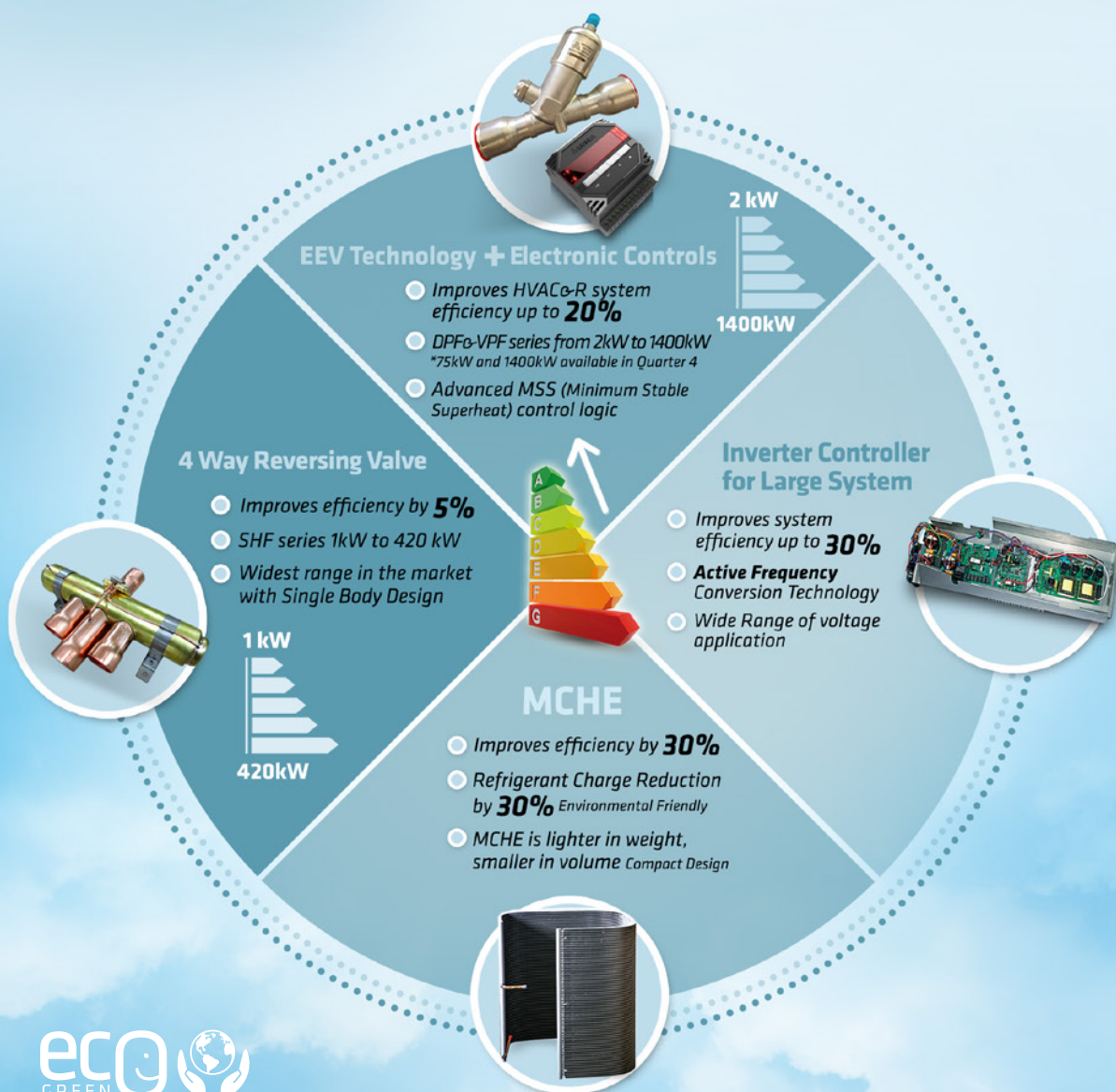
CHILLING
ideas worldwide



SANHUA YOUR ROAD MAP TO THE ENERGY EFFICIENCY DIRECTIVE*

**KEEPS YOU ONE STEP AHEAD OF THE COMING EFFICIENCY
AND ENVIRONMENTAL EUROPEAN CHALLENGES**

ADDERALES



*DIRECTIVE 2012/27/EU

ADVANCED
Technology & Solutions



CHILLING ideas worldwide

SANHUA INTERNATIONAL
info@sanhuaeurope.com

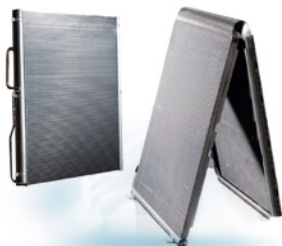
PRODUCTS FOR REFRIGERATION

*Components suitable
for installation on
refrigeration units
Using HFC refrigerants*

MICRO CHANNEL HEAT EXCHANGERS

MAIN FEATURES

- Maximum working pressure 4.5Mpa
- Available as both, evaporator and condenser
- High efficiency
- Reducing refrigerant charge



AWECO ROTARY COMPRESSORS

MAIN FEATURES

- High efficient rotary compressors
- Wide portfolio range



ELECTRONIC EXPANSION VALVES (DPF-T SERIES)

MAIN FEATURES

- Step valves for accurate refrigerant flow control
- 500steps (full stroke) - Unipolar with 12V DC Rated Voltage
- Capacity range (3,3 kW to 73,5 kW with R404A)



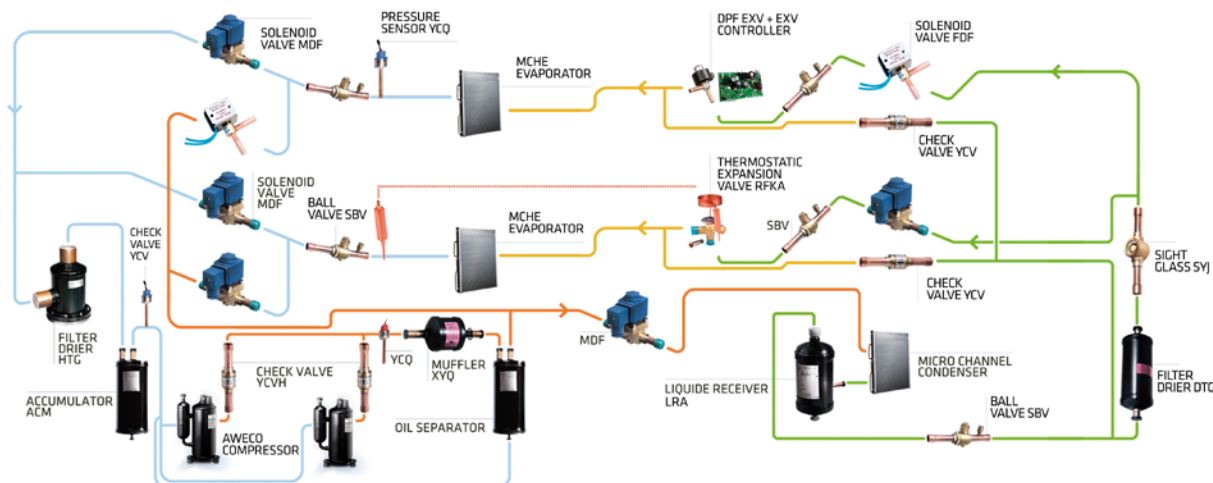
THERMOSTATIC EXPANSION VALVE (RFKH SERIES)

MAIN FEATURES

- Stainless steel capillary and sensing bulb
- Capacity range (1 kW to 24 kW with R410A)
- Thermal bulb utilizes cross charge technology, providing consistent superheat degree over the whole evaporation temperature range



Commercial Refrigeration Application Solutions



→ Cooling Circle → Discharge Line → Suction Line → Liquid Line → Injection Line

PRODUCTS FOR REFRIGERATION

THERMOSTATIC EXPANSION VALVE (RFGB SERIES)

MAIN FEATURES

- Fixed orifices
- Available with angle shape and fixed super-heating or with straight shape and adjustable super-heating
- Capacity range (1,2 kW to 7,5 kW with R404A)



THERMOSTATIC EXPANSION VALVE (RFGD SERIES)

MAIN FEATURES

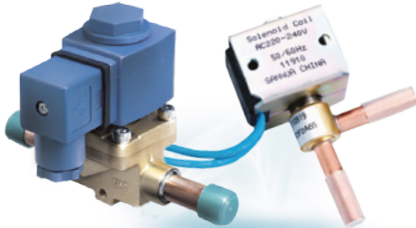
- Fixed orifices
- Straight shape and adjustable super-heating
- Capacity range (7,0 kW to 27,4 kW with R404A)



SOLENOID VALVES (MDF, FDF, HDF SERIES)

MAIN FEATURES

- Available range: connections size from 6mm to 54mm (1/4" to 2 1/8")
- New HDF series with piston actuation (Temp. limits: -40°C / +140°C)



PRESSURE SENSOR (YCQ SERIES)

MAIN FEATURES

- Total accuracy of +/- 2%FS (-30 oC to + 120oC)
- Total accuracy of +/- 0,8%FS (-40 oC to + 40oC)
- High pressure variant up to 5 Mpa and low up to 2 Mpa



ELECTRONIC EXPANSION VALVE (VPF SERIES)

MAIN FEATURES

- Energy saving thanks to very precise capacity control: up to 3800 steps
- Corrosion resistant design, long lifetime, high reliability
- Models with integrated sight glass are available



PRODUCTS FOR REFRIGERATION

*Components suitable
for installation on
refrigeration units
Using HFC refrigerants*

PISTON CHECK VALVES (YCV SERIES) – STRAIGHT / ANGLE VERSION

MAIN FEATURES

- Piston Type check valves
- Straight type: connection size from 6mm to 22mm (1/4" to 7/8")
- Angle type: connection size from 22mm to 42mm (7/8" to 1 5/8")



BALL VALVES (SBV SERIES)

MAIN FEATURES

- Models with or without access fitting
- Available range: connection size from 6mm to 108mm (1/4" to 4 1/4")



FILTER DRIERS (HTG SERIES)

MAIN FEATURES

- Available with 100% desiccant or 80% desiccant + 20% alumina
- Available with Burn Out core and Mechanical strainer
- Available range: connection size from 16 mm to 54 mm (from 5/8" to 2 5/8"); for 1;2;3;4 replaceable cores



FILTER DRIERS (DTG SERIES)

MAIN FEATURES

- Available with 100% desiccant or 80% desiccant + 20% alumina
- Available range: connection size from 6 mm to 28 mm (1/4" to 1 1/8"). Solder or flare connections



SIGHT GLASSES (SYJ SERIES)

MAIN FEATURES

- High precision color indicator
- Available range: connection size from 6mm to 22mm (1/4" to 7/8")



SANHUA'S GREAT STEP TOWARDS
GREEN TECH LINE
R290, R1270, R600A ...



COMPONENTS DESIGNED
FOR APPLICATIONS
WITH FLAMMABLE FLUIDS
SUCH AS R290/PROPANE

AVAILABLE ALSO FOR
ATEX ZONE



sanhuaclimate.com

GREEN TECH LINE

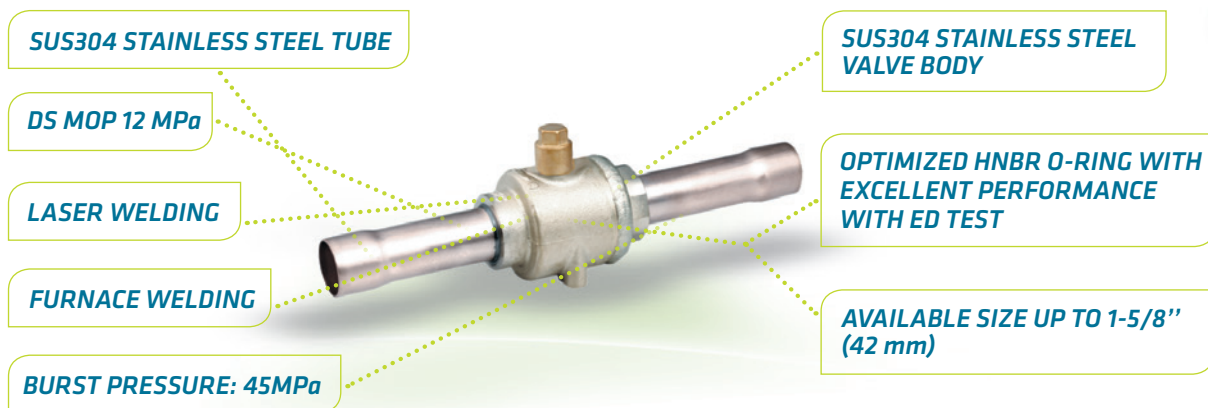
R744 LINE

Regardless sub critical
or transcritical applications
Please let SANHUA take care
of your CO₂

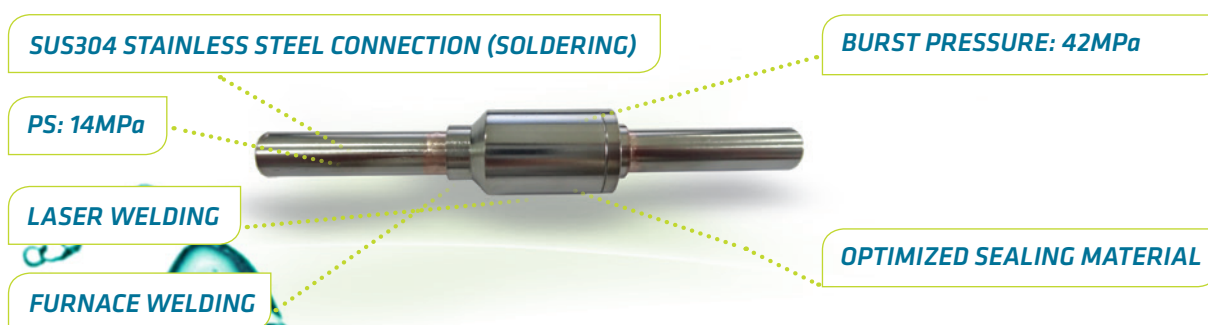
R04 SERIES ELECTRONIC EXPANSION VALVES are specially designed for CO₂ transcritical applications



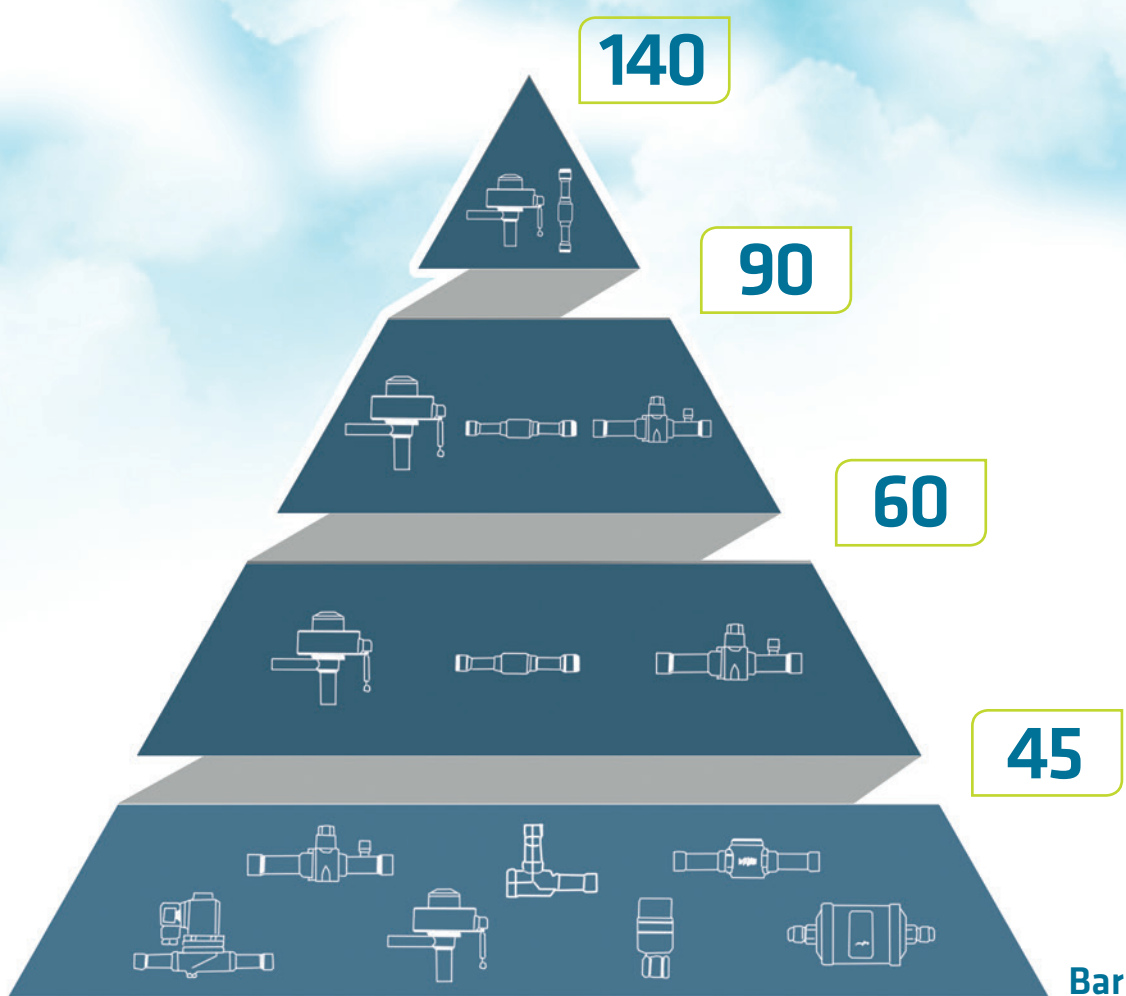
STAINLESS STEEL BALL VALVES are specially designed for CO₂ application



STAINLESS STEEL CHECK VALVES are specially designed for CO₂ transcritical applications



Sanhua is providing CO₂ products with various operation pressure



Note: Conditions could change without previous notice due to components updating or typing mistakes.
Sanhua declines any responsibility for a wrong product choice based on this table. Please make sure all your requirements are covered in our suggestion.

GREEN TECH LINE

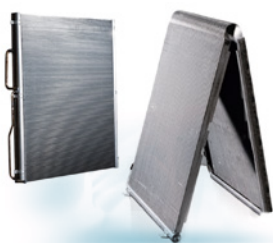
R290, R1270, R600

Components suitable
for applications with flammable
refrigerants
available also for ATEX zone

MICRO CHANNEL HEAT EXCHANGERS

MAIN FEATURES

- Maximum working pressure 4.5Mpa
- Available as both ,evaporator and condenser
- High efficiency
- Reducing refrigerant charge



AWECO ROTARY COMPRESSORS

MAIN FEATURES

- High efficient rotary compressors
- Wide portfolio range for R290



ELECTRONIC EXPANSION VALVES (DPF-T SERIES)

MAIN FEATURES

- Standard coils suitable for units with R290 charge below 150g (VDE certificate according to the norm IEC 60335 series)
- Valves for R290 suitable in combination with standard or ATEX coil
- ATEX is coming soon



THERMOSTATIC EXPANSION VALVES (RFGB SERIES)

MAIN FEATURES

- Fixed orifices
- Available with angle shape and fixed super-heating or with straight shape and adjustable super-heating
- Capacity range (1,2 kW to 7,5 kW with R404A)



SOLENOID VALVES (FDF SERIES)

MAIN FEATURES

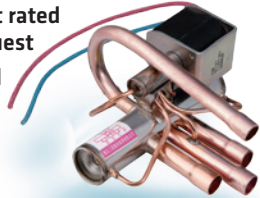
- Standard coils suitable for units with R290 (VDE certificate according to the norm DIN EN 60730-1 and IEC 60335 series)
- Available range: connections size from 1/4" to 5/8"



4 WAYS REVERSING VALVES (SHF SERIES)

MAIN FEATURES

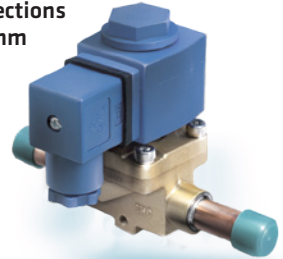
- Standard coils suitable for units with R290 charge below 150g (VDE certificate according to the norm IEC 60336-2-24)
- ATEX coils with different rated voltage available on request
- Available range: nominal capacity from 3.4 to 30.0 kW



SOLENOID VALVES (MDF SERIES)

MAIN FEATURES

- Standard coils suitable for units with R290 (VDE certificate according to the norm DIN EN 60730-1 and IEC 60335 series)
- Available range: connections size from 6mm to 54mm (1/4" to 2 1/8")



PISTON CHECK VALVES (YCV SERIES)

MAIN FEATURES

- Piston Type check valves
- Available range: connections size from 6mm to 22mm (1/4" to 7/8")



BALL VALVES (SBV SERIES)

MAIN FEATURES

- Models with or without access fitting
- Available range: connections size from 6mm to 22mm (1/4" to 7/8")



SIGHT GLASSES (SYJ SERIES)

MAIN FEATURES

- High precision color indicator
- Available range: connections size from 6mm to 22mm (1/4" to 7/8")



FILTER DRIERS (DTG, STG SERIES)

MAIN FEATURES

- Available with 100% desiccant or 80% desiccant + 20% alumina
- Available range: connections size from 6mm to 22mm (1/4" to 7/8")





sanhuacclimate.com

SANHUA INTERNATIONAL
info@sanhuaeurope.com



CHILLING ideas worldwide

